

**Dado Ceramica**

Pavimenti e Rivestimenti  
 40017 S. Matteo della Decima/Bologna/Italy/Via Sicilia 21  
 Telefono +39-0516819611/Telefax export +39-0516819650  
 Telefax Italia 0516819649  
 www.dadoceramica.it  
 info@dadoceramica.it

Stampa Tipografia Nome e Luogo - grafica Rosari & Associati-Milano con Sofia Garampelli

gres  
 porcellanato  
 rettificato

Trend

ceramica  
 e cemento  
 la semplicità della  
 perfezione

ceramic  
 and cement  
 the simplicity  
 of perfection



**Dado Ceramica**

Il cemento trae origine dalla  
 pietra, dal fuoco e dall'acqua.

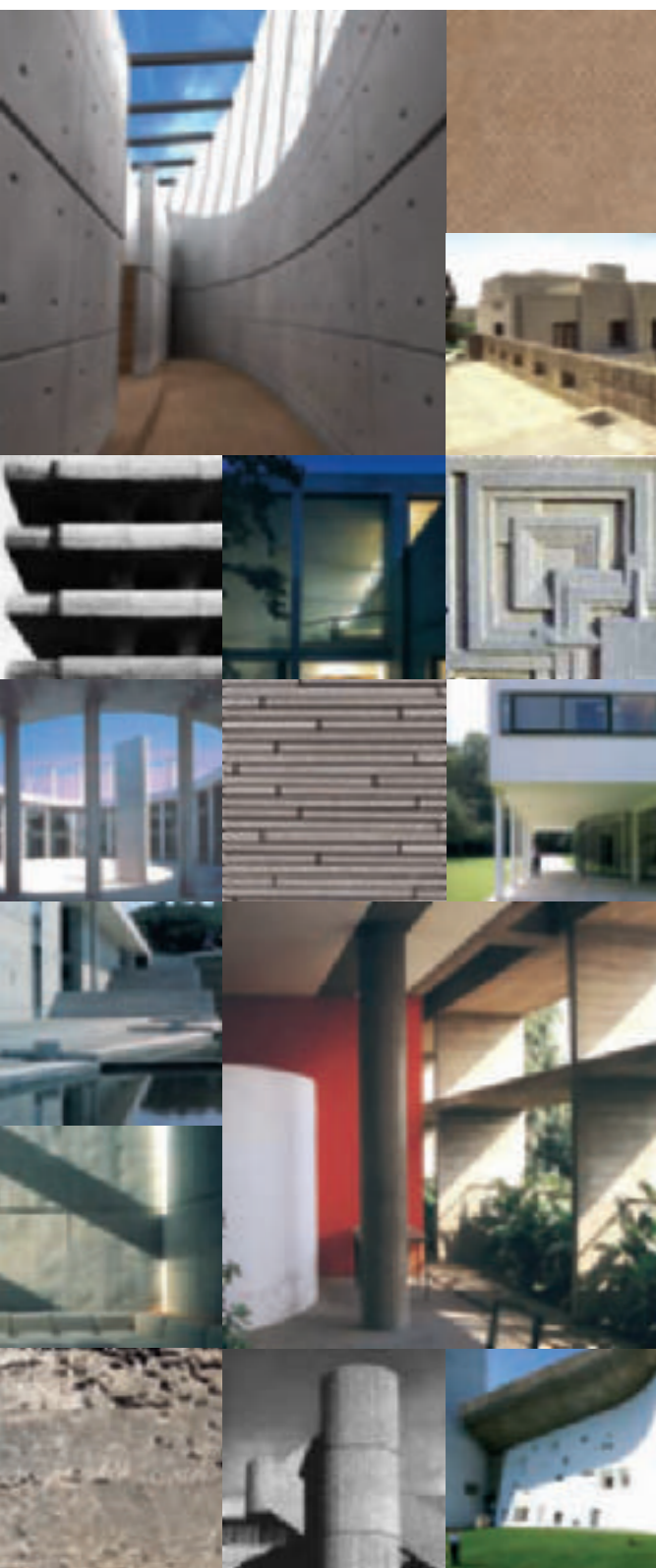


Trend

E' un prodotto della natura  
 che si adatta al genio  
 dell'uomo per migliorare la  
 qualità della vita.

*Cement's origins are  
 in stone, fire and water.  
 A product of nature, it adapts  
 to human ingenuity  
 to improve our quality of life.*

decorazione



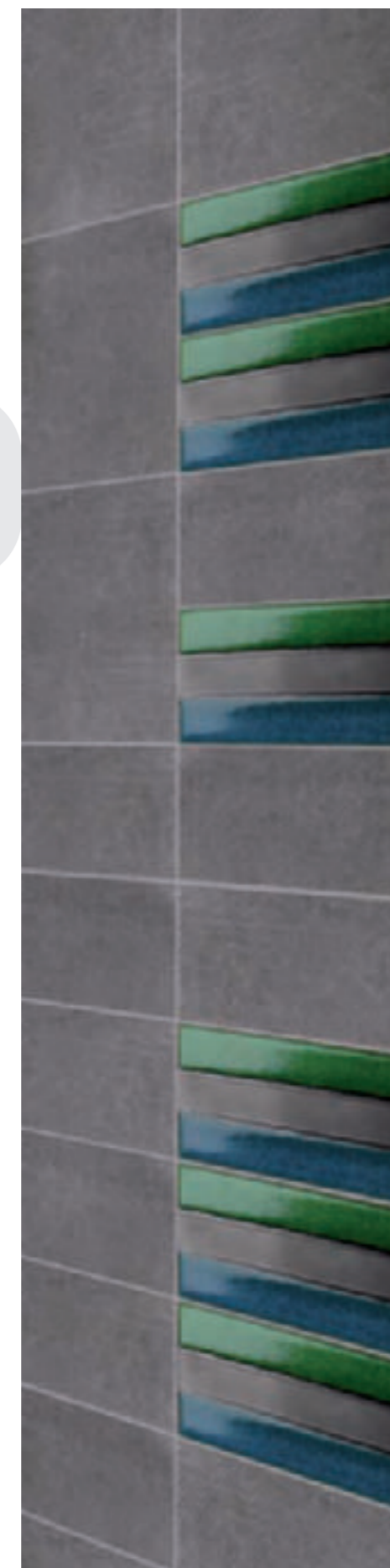
struttura  
e decorazione

interno  
esterno

naturale  
artificiale

# cemento

Case, strade, ponti,  
gallerie, dighe, grattacieli  
nascono dalla creatività  
degli architetti e dalla abilità  
realizzativa degli uomini.  
Ma è grazie al cemento che  
tali opere trovano forma e  
che, anche le più ardite,  
resistono stabili nel tempo.

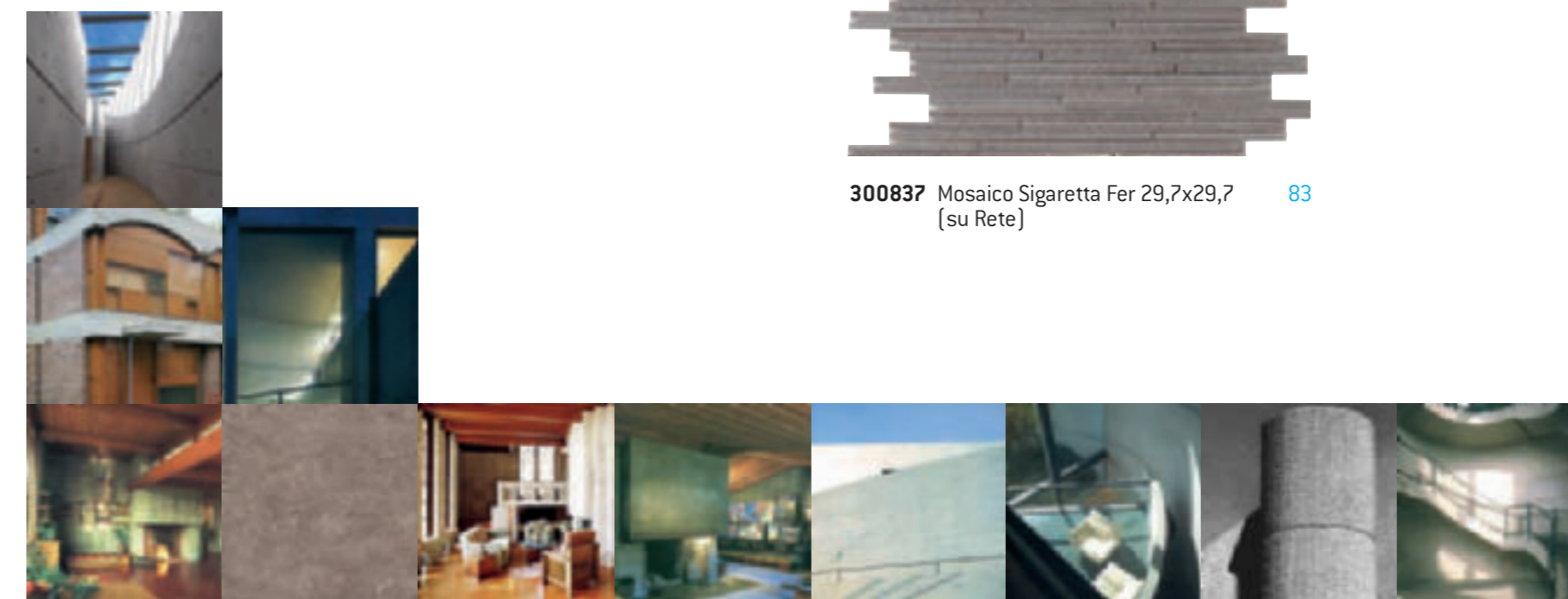


structures  
and decoration

internal  
external

natural  
artificial

Houses, roads, bridges,  
tunnels, dikes, skyscrapers  
are spawned from the  
creativity of architects and  
human building skill.  
It is because of cement that  
these works find shape, and  
even the most daring of them  
withstand the test of time.



**300830** Mosaico Sigaretta Acier 29,7x29,7 (su Rete) 83



**300831** Mosaico Sigaretta Café 29,7x29,7 (su Rete) 83



**300833** Mosaico Sigaretta Noisette 29,7x29,7 (su Rete) 83



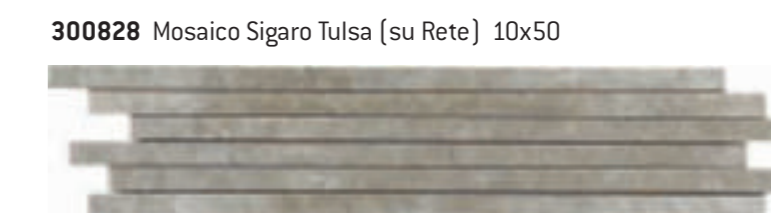
**300832** Mosaico Sigaretta Amande 29,7x29,7 (su Rete) 83



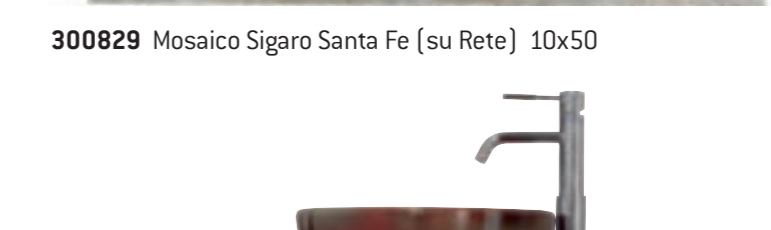
**300837** Mosaico Sigaretta Fer 29,7x29,7 (su Rete) 83



**300827** Mosaico Sigaro Pasadena (su Rete) 10x50 68



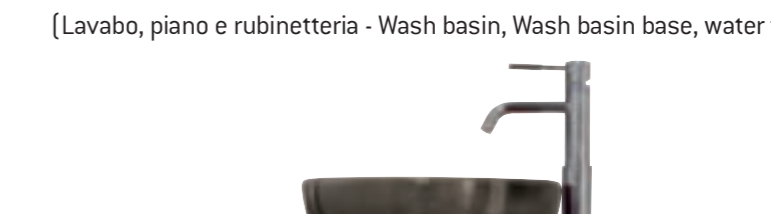
**300828** Mosaico Sigaro Tulsa (su Rete) 10x50 68



**300829** Mosaico Sigaro Santa Fe (su Rete) 10x50 68



**000942** Set Lavabo Acier (Lavabo, piano e rubinetteria - Wash basin, Wash basin base, water tap)



**000943** Set Lavabo Caffè (Lavabo, piano e rubinetteria - Wash basin, Wash basin base, water tap)



**300829** Mosaico Sigaro Santa Fe (su Rete) 10x50 68

**000943** Set Lavabo Caffè (Lavabo, piano e rubinetteria - Wash basin, Wash basin base, water tap)

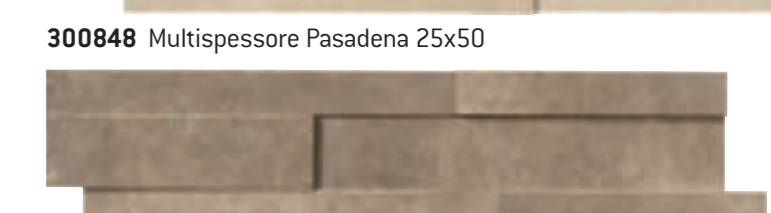
## Tabella pesi e misure - Weights and measures - Poids et mesures - Gewicht und verpackung

Articoli artikel article item	pz.collo stk/Ktn pc/boite pcs/box	spessore stärke épaisseur thickness	mq./collo qm./ktn m./boite sqm/box	Kg./pal Kg./pal Kg./pal Kg./pal	colli/europal ktn/europal boites/europal box/europal	mq./europal qm/europal m/europal sqm/europal	kg/europal kg/europal kg/europal kg/europal
12,5x50	12	9,5	0,75	14,5	48	30	720
25x50	12	9,5	1,5	29,5	24	36	730
50x50	6	9,5	1,5	30	24	36	745

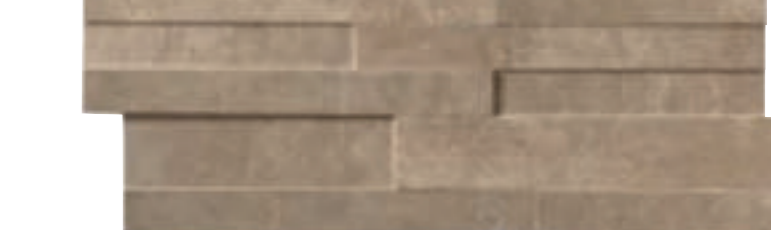
Fondi Rettificati 50x50 vendibili a multipli di colli 2 - 50x50 rectified tiles sold by 2 boxes bound together, i.e. 2 and multiples of 2



**300848** Multispessore Pasadena 25x50 82



**300849** Multispessore Tulsa 25x50 82

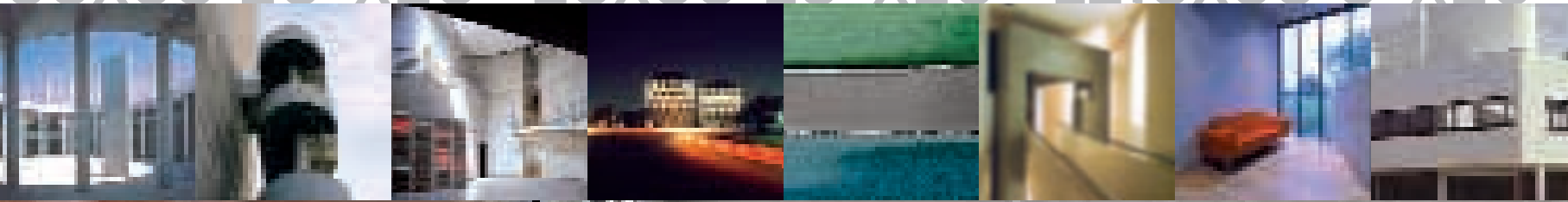


**300850** Multispessore Santa Fe 25x50 82



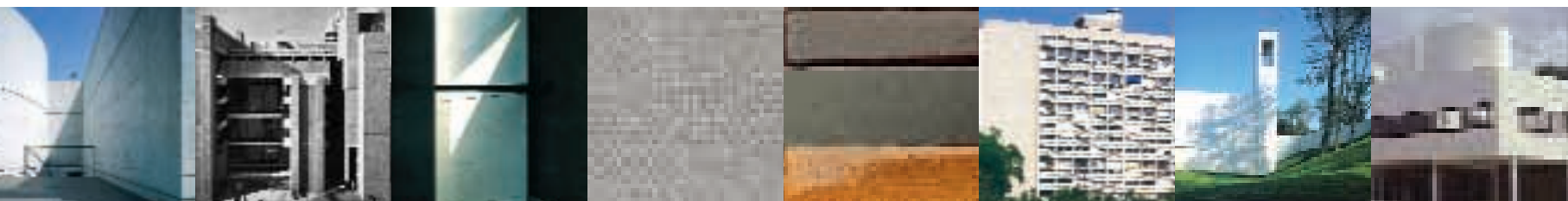
**300908** Mosaico Sigaro Mix (su Rete) 10x50 68

50x50 20"x20" 25x50 10"x20" 12.5x50 5"x20"



“Il fatto di poter creare pietre fuse di qualunque forma, superiori alle naturali, poiché capaci di resistere a tensioni, ha in sé qualcosa di magico.”

Pierluigi Nervi



## Fer

50x50 - 20"x20" 25x50 - 10"x20" 12,5x50 - 5"x20"

“Il mio calcestruzzo è più bello della pietra, lo lavoro, lo cesello. Con breccia di granito o di arenaria dei Vosgi come inerti ne faccio una materia che supera in bellezza i rivestimenti più pregiati. Il calcestruzzo è una pietra che nasce, e la pietra naturale è una pietra che muore.”

**Auguste Perret 1944**



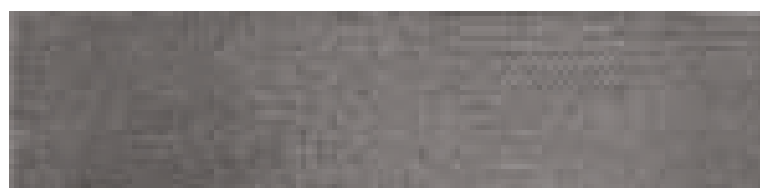
**300834** Fer Rett 50x50

79



**300835** Fer Rett 25x50

80

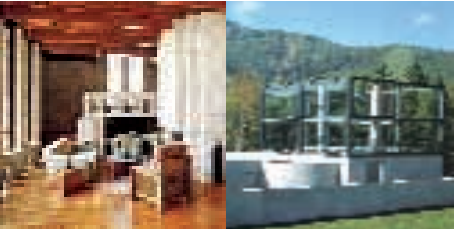


**300836** Fer Rett 12,5x50

81

# Acier

50x50 - 20"x20" 25x50 - 10"x20" 12,5x50 - 5"x20"



**300806** Acier Rett 50x50

79

*"The fact of being able to create fused stones, of whatsoever form, superior to natural stones because capable of standing up under traction, has something of a magic"*

**Pierluigi Nervi**



**300807** Acier Rett 25x50

80

*"My concrete is more beautiful than stone. I mould it. I chisel it. With granite gravel or Vosges Mountains sandstone as inert materials, I make it surpass the beauty of the finest claddings. Concrete is a stone coming to life, and natural stone is dying".*

**Auguste Perret 1944**



**300808** Acier Rett 12,5x50

81

“Per creare la decorazione è necessario usare tecnologia e materiali moderni, abbinati ad una geometria astratta delle forme e a un rinnovato studio della natura.”

**Frank Lloyd Wright**



*“Modern materials and technology must be used to create decoration, combined with an abstract geometry of forms and a renewed study of nature”.*

**Frank Lloyd Wright**



spazio



**000925**

Comp. Cromatica

**73 la Composizione**

14 Listelli in formato 6,5x20



# ornamento

“Solo la natura è ispiratrice,  
è vera, e può essere il supporto  
dell'opera umana.

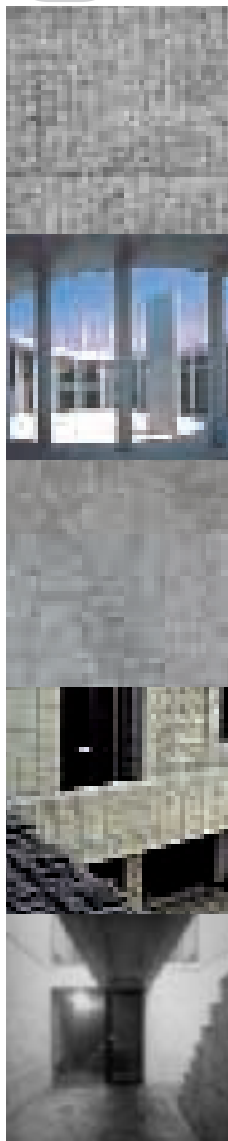
Ma non fate mai alla maniera dei  
paesaggisti, che della natura  
mostrano solo l'aspetto esteriore.  
Scrutate invece la causa, la forma,  
lo sviluppo vitale e fatene la sintesi,  
creando degli ornamenti...”

**Le Courbusier**

*“Only nature is inspiring,  
is true, and can be the basis  
for human works.*

*However, never do it in the manner  
of landscape painters, who only  
show nature's outward appearance.  
Investigate its cause, form,  
and vital development and  
synthesize it, making ornaments...”*

**Le Courbusier**





# Cafè

50x50 - 20"x20" 25x50 - 10"x20" 12,5x50 - 5"x20"



**300821** Café Rett 50x50

79



**300822** Café Rett 25x50

80



**300823** Café Rett 12,5x50

81

# Noisette

50x50 - 20"x20" 25x50 - 10"x20" 12,5x50 - 5"x20"



**300818** Noisette Rett 50x50

79



**300819** Noisette Rett 25x50

80

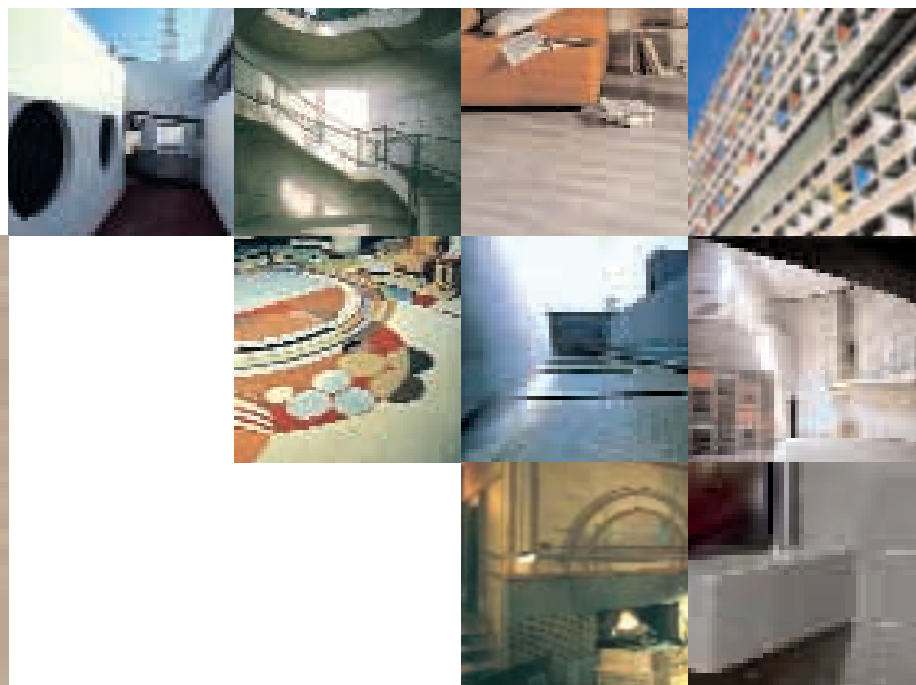


**300820** Noisette Rett 12,5x50

81

# Amande

50x50 - 20"x20" 25x50 - 10"x20" 12,5x50 - 5"x20"



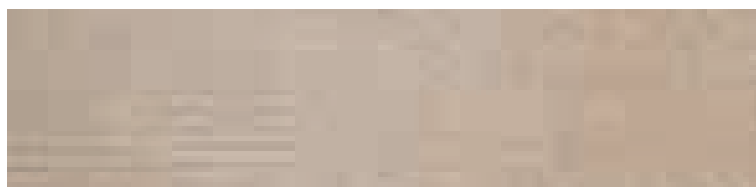
**300824** Amande Rett 50x50

79



**300825** Amande Rett 25x50

80



**300826** Amande Rett 12,5x50

81

“E' errato pensare che l'uso legittimo della macchina precluda quello della decorazione. E' esattamente il contrario.

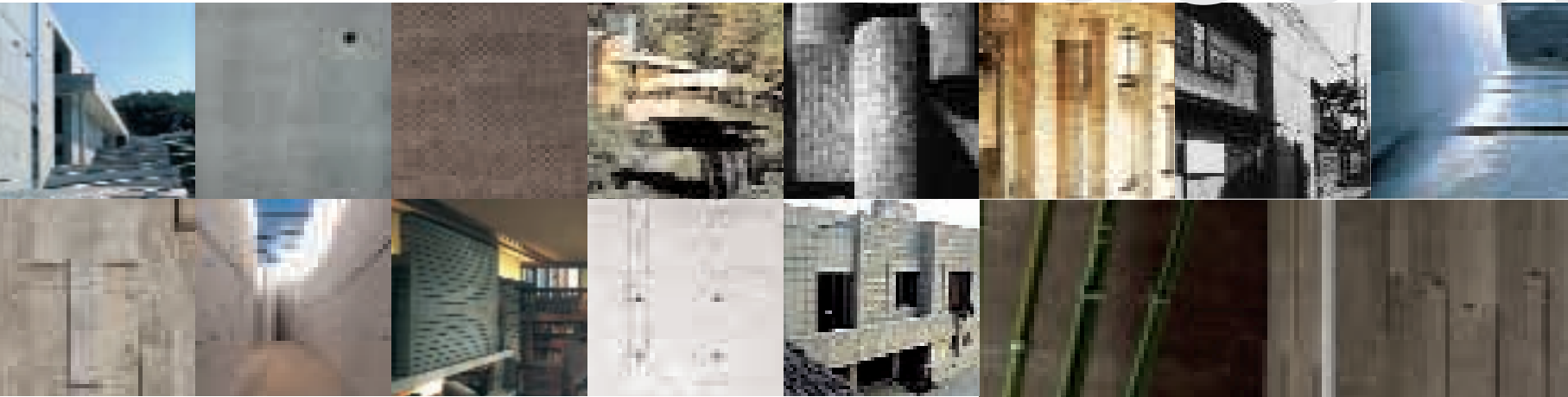
La decorazione, segno della fantasia, è oggi più vitale di quanto mai sia stato ogni altro sistema o strumento.”

**Frank Lloyd Wright**

*“It is a mistake to think that the legitimate use of the machine precludes that of decoration. It is exactly the opposite. Decoration, a mark of imagination, is more essential now than any other system or tool has ever been.”*

**Frank Lloyd Wright**

# luce o



“I materiali di costruzione fondamentali del XX secolo sono vetro, cemento e metallo. Con la mia architettura cerco di trasporre il pensiero giapponese nelle forme che possono essere costruite con questi materiali.”

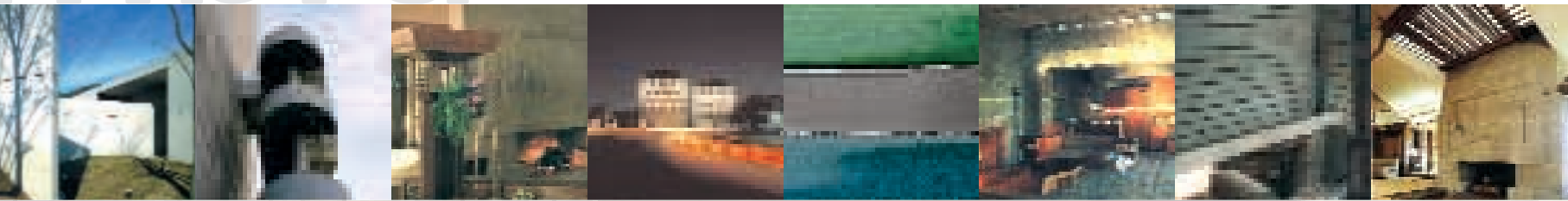
**Tadao Ando**

*“The essential construction materials of the 20th century are glass, cement and metal. With my architecture, I try to transpose the Japanese thought in forms that can be built with these materials”.*

**Tadao Ando**



# mbra



# Tulsa

50x50 - 20"x20" 25x50 - 10"x20" 12,5x50 - 5"x20"



“Ando ha concepito i suoi edifici quasi come Land Art, strutture sotterranee che lottano per emergere dal suolo e che, con la loro lotta, rappresentano visivamente l'incontro tra architettura e natura.”

**Philip Drew**

*“Ando conceived his buildings almost like Land Art, underground structures that struggle to emerge from the earth, and, in their struggle, visually represent the encounter between architecture and nature”.*

**Philip Drew**



**300812** Tulsa Rett 50x50

79



**300813** Tulsa Rett 25x50

80



**300814** Tulsa Rett 12,5x50

81

# Pasadena

50x50 - 20"x20" 25x50 - 10"x20" 12,5x50 - 5"x20"

# respiro



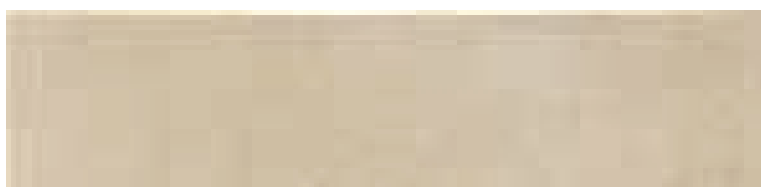
**300809** Pasadena Rett 50x50

79



**300810** Pasadena Rett 25x50

80



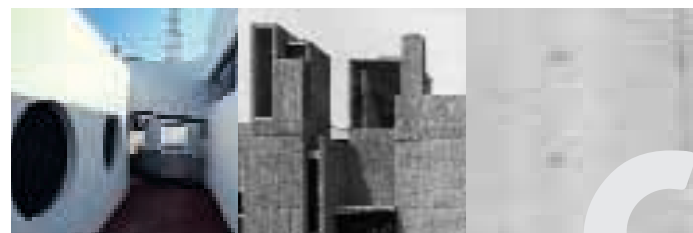
**300811** Pasadena Rett 12,5x50

81



# Santa Fe

50x50 - 20"x20" 25x50 - 10"x20" 12,5x50 - 5"x20"

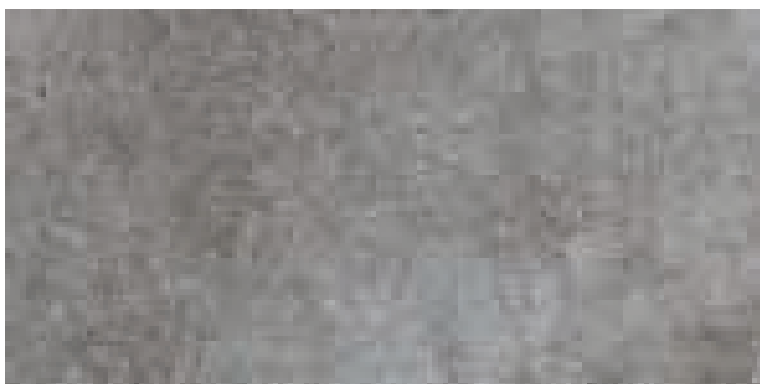


# supref



**300815** Santa Fe Rett 50x50

79



**300816** Santa Fe Rett 25x50

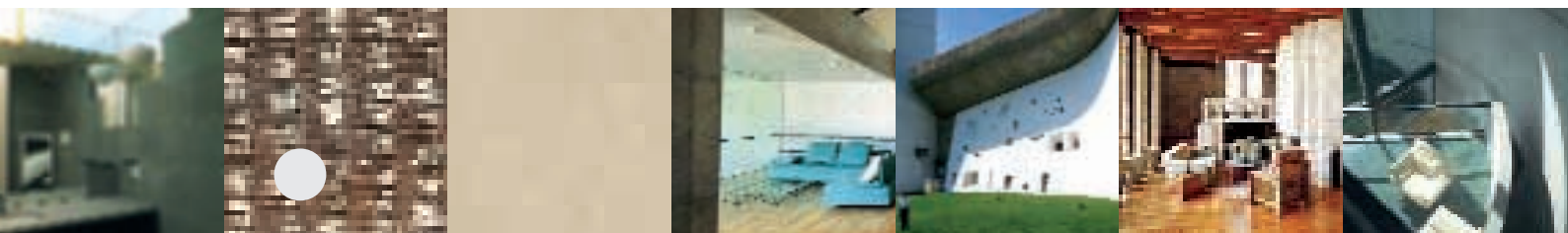
80



**300817** Santa Fe Rett 12,5x50

81






# icie





**201153** Climber 12,5x50 Pz.box 12  **86**



**201152** List. Climber 5x50 Pz.box 12  **44**



**201170** List. Rols 8x50 Pz.box 6 **59**



**201164** List. Nardin Fuoco 12,5x50 Pz.box 12 **74**



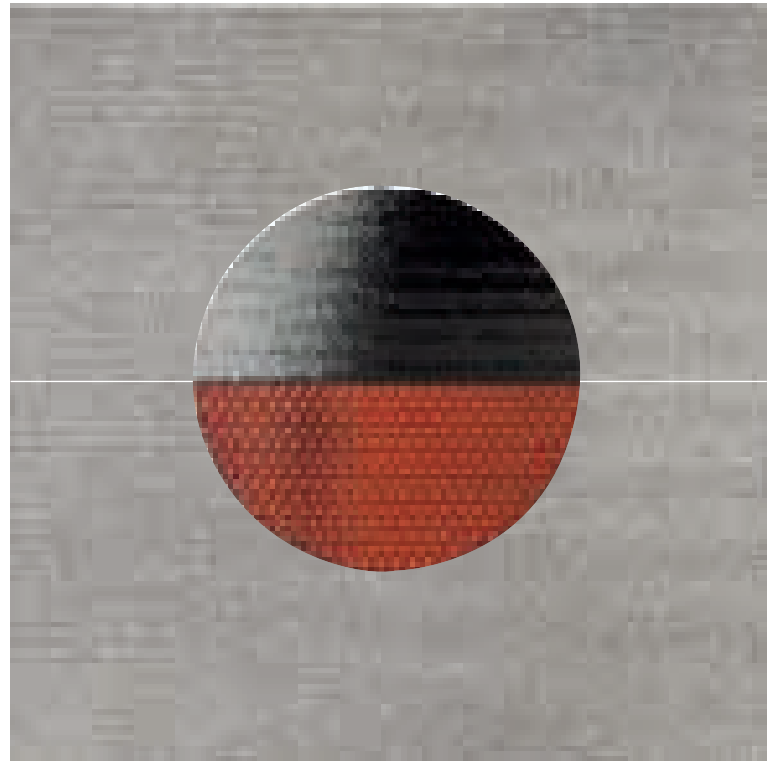
**201165** List. Nardin Mare 12,5x50 Pz.box 12 **74**



**201151** List. Blackred 4,5x50 Pz.box 12 **46**

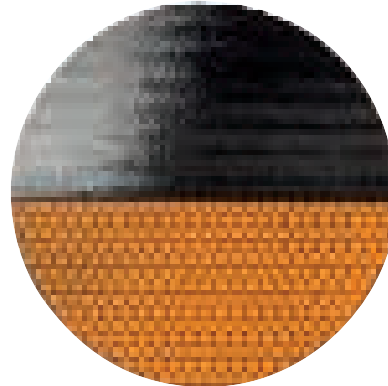


**201150** List. Blackorange 4,5x50 Pz.box 12 **46**



**000929** Acier 25x50 Taglio per Cerchio Pz.box 2 **78** (2 Pz.)  
**201154** Cerchio Blackred Pz.box 4 **75**

Also available for colors ACIER and CAFE'.



Questi prodotti potrebbero presentare la caratteristica puntinatura del rosso al selenio  
 These products may present the typical dots of red colour obtained from selenium

**000930** Cafè 25x50 Taglio per Cerchio Pz.box 2 **78** (2 Pz.)  
**201155** Cerchio Blackorange 4,5x50 Pz.box 4 **75**

