

# Happyfruit<sup>20x20 8"x8"</sup>



# Happyfruit<sup>20x20 8"x8"</sup>

FRUTTA  
Cocco  
Arancia  
Kiwi  
Limone  
Uva nera  
Pomelmo

*FRUIT*  
*Coconut*  
*Orange*  
*Kiwi*  
*Lemon*  
*Black grapes*  
*Grape fruit*



**Dado Ceramica**

Pavimenti e Rivestimenti  
40017 S.Matteo della Decima/Bologna/Italy/Via Sicilia 21  
Telefono +39-0516819611/Telefax export +39-0516819650  
Telefax Italia 0516819649  
[www.dadoceramica.it](http://www.dadoceramica.it)  
[info@dadoceramica.it](mailto:info@dadoceramica.it)



**Dado Ceramica**

# Happyfruit

## Cocktail Mimosa

3 arance

1 cucchiaino di zucchero

un po' di Campari.

Mettere nello shaker il succo

delle arance, lo zucchero

e il Campari. Agitare bene, poi

versare nei flutes con

spumante secco.

## Mimosa cocktail

3 oranges

1 spoon sugar

a dash of Campari.

Put the juice of the

oranges, the sugar

and the Campari

into the cocktail shaker.

Shake well and pour

into champagne flutes

with dry sparkling

white wine.



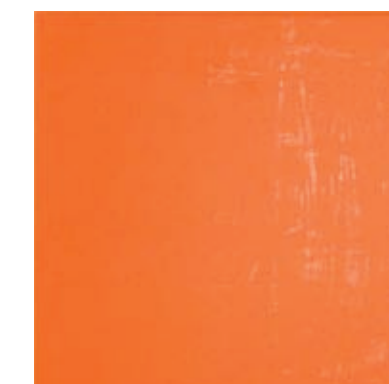
R01946 Cristallo HR 25x25 66



R02092 Soleado HR 25x25 77



R01944 Muschio HR 25x25 66



R02198 Melon HR 25x25 15



R02199 Caraibi HR 25x25 66



R01943 Turchese HR 25x25 66

## Tabella pesi e misure Weights and measures

Articolo Artikel Article Item	Pz.collo Stk/Ktn Pc/boite pcs/box	Spessore Stärke Epaisseur Thickness	Mq./collo Qm./ktn M./boite Sqm/box	Kg./collo Kg/Ktn Kg/boite Kg/box	Colli/Europal Ktn/Europal Boites/Europal Box/Europal	Mq./Europal Qm/Europal M/Europal Sqm/Europal	Kg./Europal Kg./Europal Kg./Europal Kg./Europal
20x20	30	7,6	1,2	16,4	95	114	1590
25x25 HR	18	9	1,125	21,3	80	90	1710





# Happyfruit

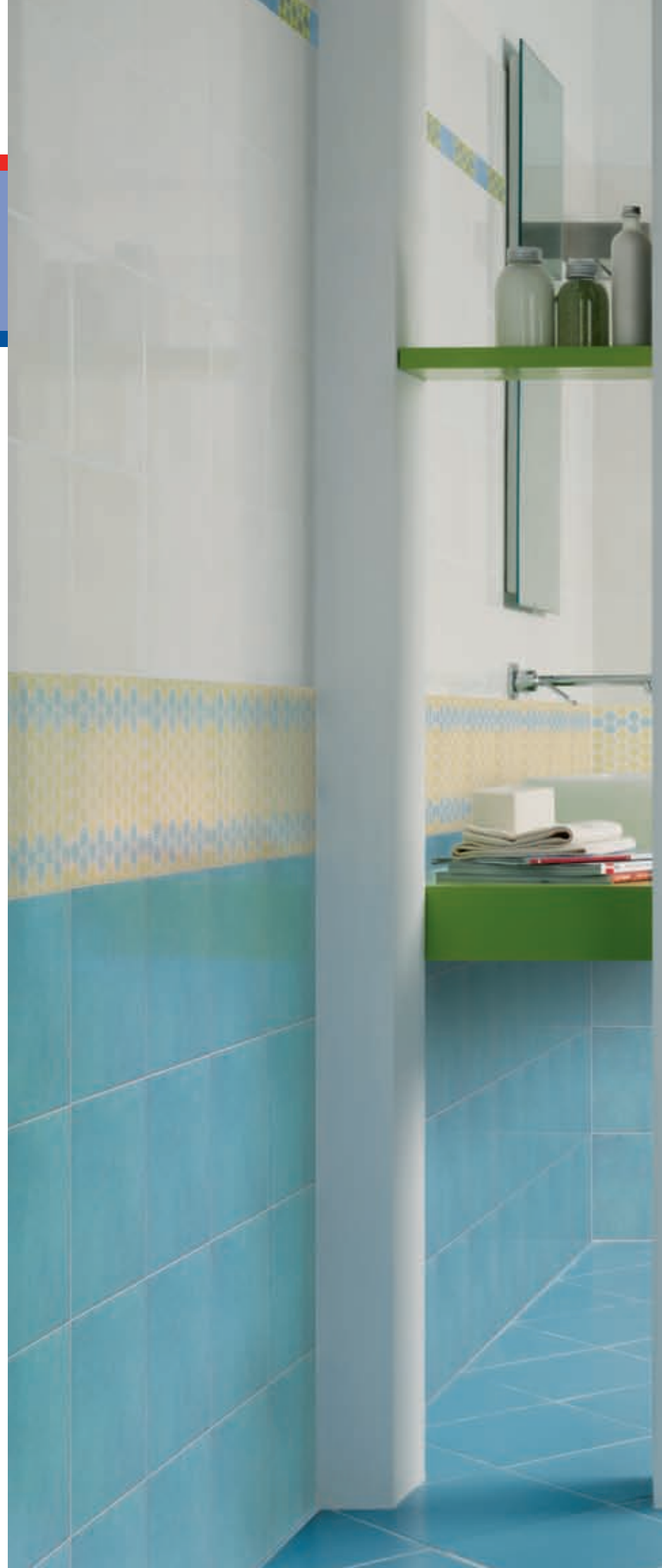
## Cocktail Bellini

Frullare 1 pesca  
dalla polpa bianca nel mixer  
con ghiaccio tritato  
e un po' di sciroppo  
di zucchero.

Versare il contenuto  
nelle coppe e aggiungere  
champagne  
ben ghiacciato.

## *Bellini cocktail*

*Blend the flesh  
of 1 white peach  
in the blender  
with crushed ice  
and a little  
sugar syrup.  
Pour the mixture  
into champagne  
coupes and add ice  
cold champagne.*









# Happyfruit

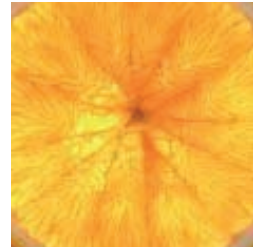
## Cocktail Rossini

6 fragole mature e dolci  
6/10 di champagne.  
Centrifugare le fragole  
con qualche goccia  
di lime.

Riempire i flutes  
aggiungendo lo champagne  
molto ghiacciato.

## Cocktail Rossini

*6 mature, sweet  
strawberries  
6/10 champagne.  
Blend the strawberries  
with a few drops  
of limejuice.  
Fill the champagne  
flutes and add ice  
cold champagne.*





# Happyfruit

## *Drink Melograno*

1 pompelmo rosa  
prosecco  
qualche goccia di cassis  
chicchi di melograno.  
Miscelare il succo  
di pompelmo con il  
prosecco ghiacciato  
e il cassis. Ornare i flutes  
con chicchi di melograno.

## *Drink Pomegranate*

*1 pink grapefruit  
Prosecco  
(dry sparkling white wine)  
a few drops of Cassis  
(blackcurrant) cream  
pomegranate seeds.  
Mix the grapefruit  
juice with the ice-cold  
Prosecco wine and  
the Cassis. Decorate the  
champagne flutes with  
the pomegranate seeds.*







# Happyfruit

## Cocktail al Rhum

3 lime  
foglioline di menta  
3 cucchiaini di zucchero di canna  
200 ml di rum  
120 ml di succo di mango  
8 gocce di angostura.  
Miscelare gli ingredienti  
in una caraffa  
e servire ghiacciato.

## Cocktail al Rhum

*3 limes  
a sprig of mint  
3 spoons brown sugar  
200 ml rum  
120 ml mango juice  
8 drops angostura bitters.  
Mix the ingredients  
in a jug and  
serve ice cold.*



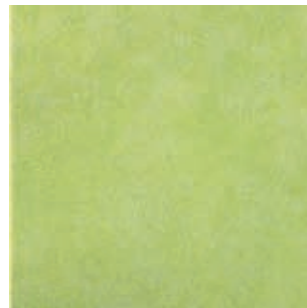
# Happyfruit



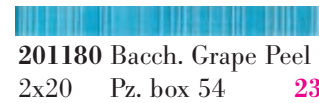
**300919** Cocco Peel  
20x20 **08**



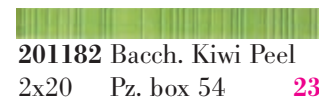
**300923** Grape Peel  
20x20 **13**



**300921** Kiwi Peel  
20x20 **13**



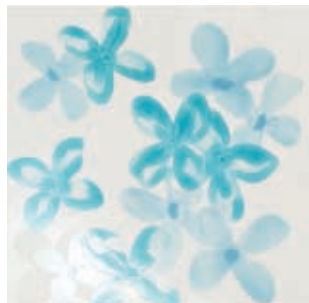
**201180** Bacch. Grape Peel  
2x20 Pz. box 54 **23**



**201182** Bacch. Kiwi Peel  
2x20 Pz. box 54 **23**



**000953** Ondaflex  
20x20 Pz. box 18 **41**



**000962** Dogma B  
20x20 Pz. box 18 **37**



**000955** Flurry Kiwi B  
20x20 Pz. box 18 **87**



**000958** Stripes Grape  
20x20 Pz. box 18 **40**



**000961** Dogma A  
20x20 Pz. box 18 **37**



**000954** Flurry Kiwi A  
20x20 Pz. box 18 **87**



**000952** Kiwi Drop  
20x20 Pz. box 18 **27**



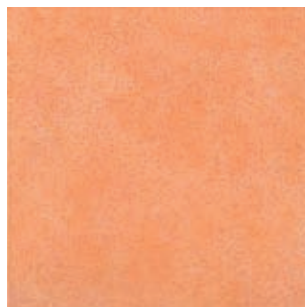
**201186** List. Flurry Kiwi  
10x20 Pz. box 12 **40**



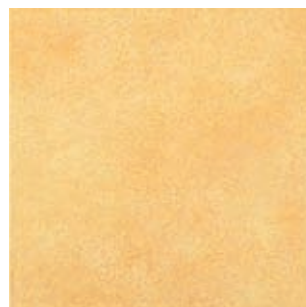
**201185** List. Kiwi Drop  
4,5x20 Pz. box 36 **26**



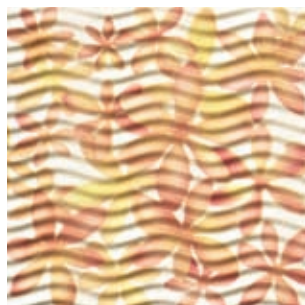
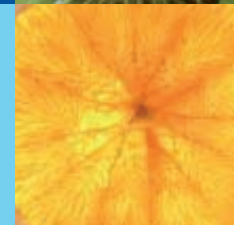
**300919** Cocco Peel  
20x20 **08**



**300922** Orange Peel  
20x20 **13**



**300920** Lemon Peel  
20x20 **13**



**000957** Flurry Orange B  
20x20 Pz. box 18 **87**



**201181** Bacch. Orange Peel  
2x20 Pz. box 54 **23**



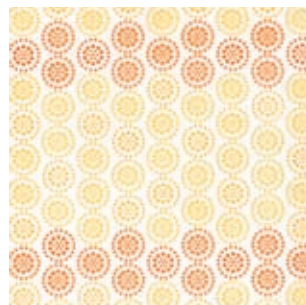
**201183** Bacch. Lemon Peel  
2x20 Pz. box 54 **23**



**000959** Stripes Orange  
20x20 Pz. box 18 **40**



**000956** Flurry Orange A  
20x20 Pz. box 18 **87**



**000951** Lemon Drop  
20x20 Pz. box 18 **27**



**201187** List. Flurry Orange  
10x20 Pz. box 12 **40**

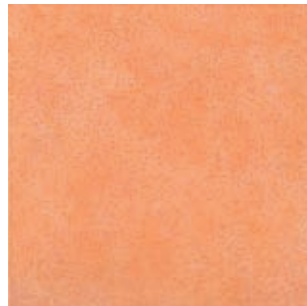


**201184** List. Lemon Drop  
4,5x20 Pz. box 36 **26**

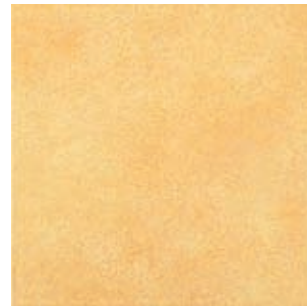
# Happyfruit



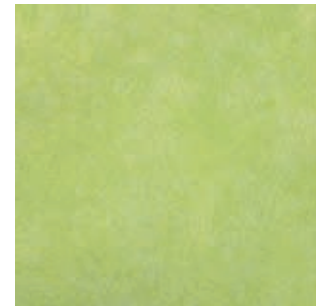
**300919** Cocco Peel  
20x20 **08**



**300922** Orange Peel  
20x20 **13**



**300920** Lemon Peel  
20x20 **13**



**300921** Kiwi Peel  
20x20 **13**



**000963** Shine  
20x20 Pz. box 18 **04**



**201189** List. Shine Orange  
3x20 Pz. box 54 **28**



**201191** List. Shine Lemon  
3x20 Pz. box 54 **28**



**201188** List. Shine Kiwi  
3x20 Pz. box 54 **28**



**201190** List. Shine Grape  
3x20 Pz. box 54 **28**



**300923** Grape Peel  
20x20 **13**



**000960** Lurex  
20x20 Pz. box 25 **75**



**000964** Cocco Peel Taglio  
Pz. box 18 **12**

**201194** Tozz. Fig **69**



**000964** Cocco Peel Taglio  
Pz. box 18

ozz. Orange Juice **69**